

Click on any logo to view the Hartridge web site.



Marketing Note: HMN54 Delphi Authorised DFP3 Test Solution

Hartridge have released new products to increase the productivity of your customer's AVM2-PC.

Test Delphi's **DFP3** pump with our **HF1138** "All makes Pump Kit" and get useful diagnostic data on vehicles, pumps etc with our **DAQ400** Data Acquisition Kit.

Contents

1. Overview
2. HF1138
3. DAQ400
4. Standard Accessories / Requirements
5. Delphi Authorisation
6. Pricing / Availability
7. Distributor Sales Flyer

1. Overview

Delphi DFP3 CR pumps are currently fitted to a number of vehicles from Daimler Chrysler, Kia, JCB and PSA (Peugeot / Citroen). Details of specific vehicle applications and parts availability are available from Delphi.

To take advantage of this new opportunity and increase the potential utilisation of the AVM2-PC, two new items HF1138 and DAQ400 are required combined with other standard Hartridge CR pump test accessories.

2. HF1138 Delphi DFP3 “All Makes” Pump kit.

This pump kit provides the capability to test the current Delphi DFP3 pump applications, (listed in section 1); using the standard Hartridge “All Makes” CR pump software and CR pump test equipment (see section 4).

The kit contains pump mounting and adapter plates, Oldham couplings for the Daimler and PSA applications, inlet and return fittings, various fittings and a new pump cable for the Daimler and Kia applications.

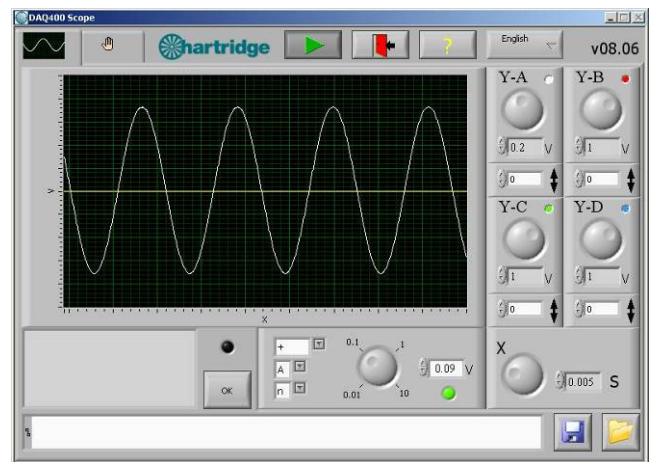


3. DAQ400 – Hartridge Data Acquisition Kit

The Hartridge DAQ400 is a stand-alone, general purpose data acquisition kit that has numerous uses around the workshop. The core elements of the kit are a data acquisition unit with USB connectivity, and the associated “DAQ400 Scope” software package that displays the signals acquired by the unit in an easy-to-use oscilloscope format. The “DAQ400 Scope” software can be installed on any compatible PC (see minimum requirements in section 3.1), as well as the PC on the AVM2-PC test bench.

Potential uses around the workshop include:

- CR pump diagnosis (pressure waveform)
- On-vehicle diagnosis
- Test bench functional diagnostics



The DAQ400 kit is also supplied with specific breakout leads for the AVM2-PC test bench, allowing monitoring of:-

- CR pump pressure – providing a graphical display of the pumps pressure waveform and profile.
- Bench rotary encoder signals 128 and 1024 Pulse Per Rev (PPR)
-



In this mode the DAQ400 is used to monitor the pressure waveform of the pump which can indicate the status and consistency of the individual pumping elements. For other data acquisition uses standard BNC test leads can be connected (not supplied).

The “DAQ400 Scope” software features are as follows:

- Simultaneous measurement of up to 4 analogue inputs (0-25V)
- Individual vertical scaling (Y axis) for each input
- Common Timebase scaling (X axis)
- Triggering function with slope, channel, and level adjustments
- Run/Hold feature
- Ability to save waveforms to file and re-load later

3.1 Minimum PC Requirements

The minimum PC requirements to operate the “DAQ400 Scope” Software are as follows:-

- Minimum 1.8GHz processor speed
- Minimum 256MB free RAM
- Minimum 200MB free HDD space
- Windows XP Operating System
- Minimum screen resolution of 800x600 or more.
- Minimum colour pallet of 256 colours.
- Free USB 2.0 Port

NOTE: laptops meeting these requirements can be used but only if mains-powered (running on battery power can affect the current available from the USB port, depending on manufacturer)

4. Standard Accessories / Requirements

In order to use the HF1138 DFP3 Pump Kit the following Hartridge equipment is also required.



AVM2-PC Test Bench:
NOTE: see section 3.1 before installing the DAQ400 Scope software



HB378 Common Rail Base Kit *



HF1130 Pump controller



HF1132 Delphi DFP1 CR Pump Test Kit



ADC298 Service drive coupling *

*Note: also used for Siemens and Denso CR pump testing

5. Delphi Authorisation

Delphi and Hartridge are pleased to announce that the HF1138 and DAQ400 products described form the basis for the Delphi Authorised Test solution when used in conjunction with the Delphi supplied OCRES and DDRX117 DFP3 Head to Head measurement software.

The launch of these products and the Delphi authorised solution is timed to coincide with Delphi's release of DFP3 OCRES test plans and pump parts program.

Delphi have released a separate marketing note **ref: DM0720**

Please contact your local Delphi Distributor for more details on:-

- OCRES
- Head to Head measurement
- Delphi specific requirements
- Parts availability
- Vehicle applications

6. Pricing and Availability

New Items

Item	Description	List price £
HF1138	Delphi "all makes" DFP3 CR Pump Kit	660
DAQ400	"All Makes" Data Acquisition Oscilloscope	1650

Existing Accessories

Item	Description	List price £
HB378	Common Rail Base Kit	5025.40
HF1130	All Makes Common Rail Pump Controller	2527.74
ADC298	Service Drive Unit	1997.55

Availability

The order book for these items is open, and the first batch of 10 units is available for dispatch.

Additional Batches for September & October will follow as demand dictates

7. Sales Flyer

Contained in the file sent with this marketing note is a sales flyer that you can use in your communications to the workshops in your territory.

The flyer contains the key marketing details and we have left spaces for you to include your contact details and the pricing that you will offer your customers.

We have provided this to make it very easy for you to inform your customers of this exciting new product by POST, FAX or EMAIL.

- END -

Should you require any further information, please do not hesitate to contact your Territory Manager.

Best wishes,

Tony Walters
Sales & Marketing Manager



The Hartridge Building
Network 421
Radclive Road
Buckingham MK18 4FD
United Kingdom

www.hartridge.com

Main Tel: +44 (0)1280 825600

Fax: +44 (0)1280 825601



© Hartridge™ 2008

The information contained in this email is confidential and is intended for the recipient(s) only. If you have received this email in error please contact the originator immediately. The contents must not be disclosed to any other person, nor copies taken. Whilst we make all reasonable attempts to safeguard our emails and attachments from viruses, we cannot ensure such exclusion and no liability is accepted for any loss or damage due to virus transfer or infected email transmissions.